

# I/O PIN ASSIGNMENTS

## AC INPUT : MIL-C-24308 (9C4P)

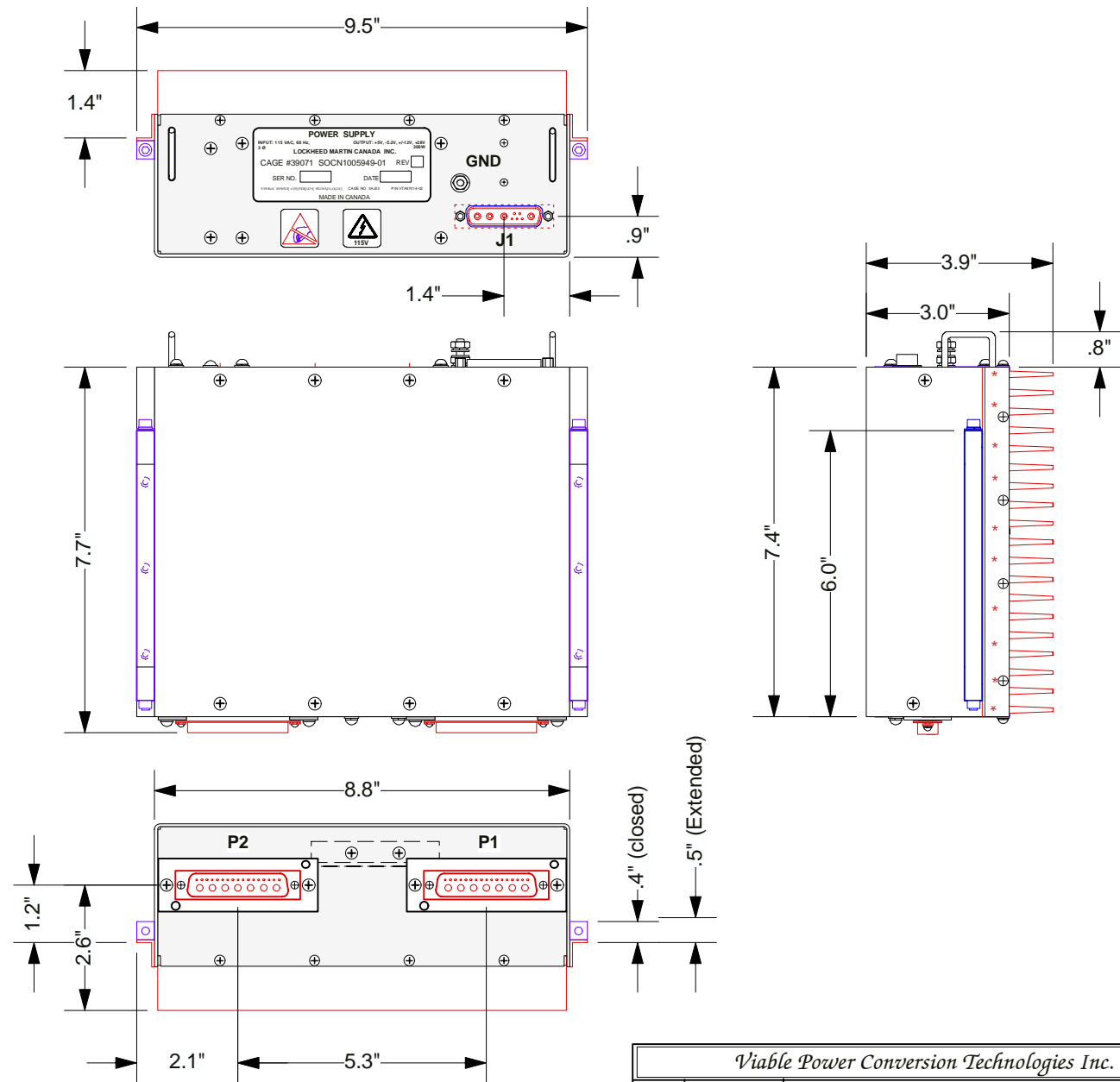
J1-A1	115VAC
J1-A2	115VAC
J1-A3	115VAC
J1-SHELL	GROUND (Chassis)

## DC OUT : DDDMMY24W7P

P1-1	Primary +5V Test
P1-2	WATCHDOG*
P1-3	CARDFAIL*
P1-4	+12VDC Test
P1-5	+12VDC
P1-6	12VDC Return
P1-7	-12VDC
P1-8	-12VDC Test
P1-10	ACFAIL*
P1-11	SYSFAIL*
P1-14	Sec. +5VDC Test
P1-16	Sec. +5VDC Rtn. Sense
P1-17	Sec. +5VDC Sense
P1-A1	Primary +5VDC
P1-A2	Primary +5VDC
P1-A3	Primary +5VDC Rtn
P1-A4	Primary +5VDC Rtn
P1-A6	Secondary +5VDC Rtn
P1-A7	Secondary +5VDC

## DC OUT : DDDMMY24W7P

P2-1	- 5.2VDC Test
P2-2	+28VDC Test
P2-3	COMP-FAIL Source
P2-4	COMP-FAIL RTN
P2-6	Primary +5VDC Fail
P2-7	Secondary +5VDC Fail
P2-8	+12VDC FAIL
P2-9	- 12VDC FAIL
P2-10	- 5.2VDC FAIL
P2-11	+28VDC FAIL
P2-12	OVERTEMP*
P2-14	+28VDC ON/OFF Source
P2-15	+28VDC ON/OFF Rtn
P2-16	+28VDC PSFAIL Source
P2-17	+28VDC PSFAIL Rtn
P2-A1	- 5.2VDC
P2-A2	- 5.2VDC Return
P2-A6	+28VDC
P2-A7	+28VDC Return



**NOTE:** WEIGHT 9.9 lb. (4.5 kg.)

3AJØ3			
<i>Viabile Power Conversion Technologies Inc.</i>			
DRAWN:	J.STEPIEN	<b>115V L-L 60Hz 3Ø 330W AC to DC PSU</b>	
DATE:	01.FEB.00		
CHKD:		+5V/20A, +5V/4A, -5.2V/3A, ±12V/0.1A, +28V/6A	
DATE:			
APPVD:		size	<b>VOI 97014-02</b>
DATE:		A	
Scale 1:3.5		Sheet 1 of 1	Rev.