

I/O PIN CONFIGURATIONS

AC POWER INPUT	
AC -1	GND
AC -2	LINE
AC -3	NEUT

OUTPUT POWER	
J1 MS 3102E 18-10S	
J1-A	+28 VDC
J1-B	+28 VDC RTN.
J1-C	COOLING / HEATING (+)
J1-D	COOLING / HEATING (-)

CABLE DETECTOR - COOLING SYSTEM - TEMPERATURE	
J7 DE9PK87 (9 PIN)	
J7-1	N/C
J7-2	N/C
J7-3	N/C
J7-4	N/C
J7-5	N/C
J7-6	SIGNAL RETURN 1
J7-7	SIGNAL RETURN 2
J7-8	SIGNAL
J7-9	N/C

MAIN UNIT POWER ON/OFF CONTROL	
J8 DE9SA197 (9 PIN)	
J8-1	N/C
J8-2	N/C
J8-3	AC REMOTE ON/OFF RTN
J8-4	N/C
J8-5	N/C
J8-6	N/C
J8-7	N/C
J8-8	N/C
J8-9	AC REMOTE ON/OFF

RELAY UNIT POWER ON/OFF CONTROL	
J9 DE9SA197 (9 PIN)	
J9-1	REMOTE ON/OFF RTN
J9-2	REMOTE ON/OFF
J9-3	N/C
J9-4	N/C
J9-5	N/C
J9-6	N/C
J9-7	N/C
J9-8	N/C
J9-9	N/C

HUMIDITY SENSOR	
J10 DE9PK87 (9 PIN)	
J10-1	N/C
J10-2	N/C
J10-3	N/C
J10-4	HUMIDITY SENSOR
J10-5	HUMIDITY SENSOR RTN.
J10-6	N/C
J10-7	N/C
J10-8	N/C
J10-9	N/C

NOTE:

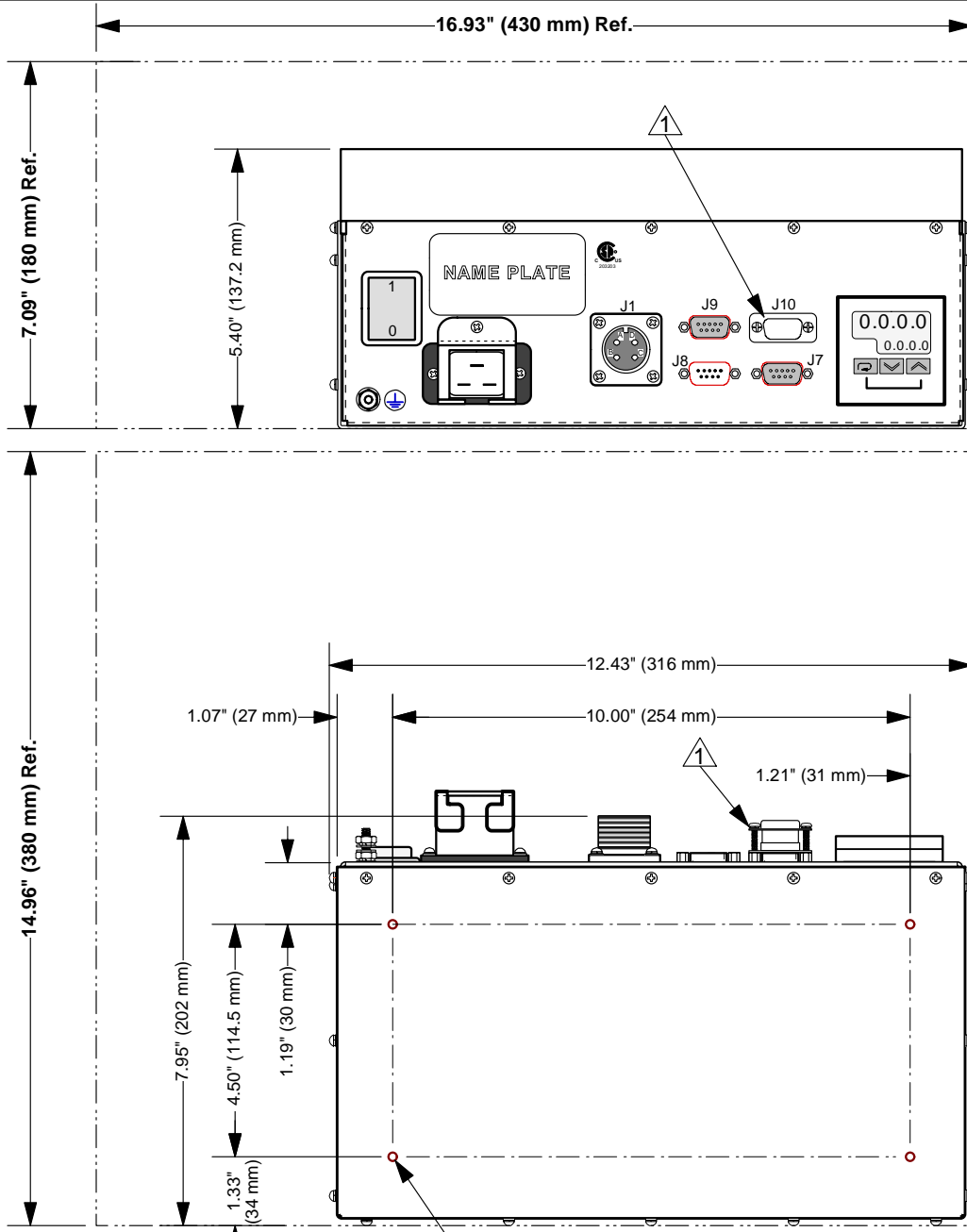
1. TO USE HUMIDITY SENSOR CONNECTOR (J10), REMOVE SCREEN CAP AND ASSOCIATED JUMPER CONNECTOR.

This Drawing contains trade secrets and/or confidential information ("Proprietary Information") of Viable Power Conversion Technologies ("VPCT") which, if disclosed, could cause financial loss to, or prejudice the competitive position of, VPCT. The Proprietary Information shall not be used for any purpose other than the evaluation of this proposal. Disclosure of or access to such Proprietary Information may not be made or given to third parties without VPCT's prior written consent.

16.93" (430 mm) Ref.

7.09" (180 mm) Ref.

14.96" (380 mm) Ref.



SELF-CLINCHING NUT (METRIC)
FOR M4 X 0.7, PEM CLS-M4-0
4 PLACES.

WEIGHT \leq 5 Kg.

REVISIONS

Rev.	DESCRIPTION	Date	Approv.
B	ECO - 170A	28.JAN.04	

Viable Power Conversion Technologies Inc.

DRAWN:	J. STEPIEN
DATE:	18.FEB.2003
CHKD:	C.Z.
DATE:	
APPVD:	G.C.
DATE:	
SIZE:	A
SCALE:	1 : 3.5

DWG. NAME:		FPD - MAIN UNIT LAYOUT	
CAGE:	3AJ03	DWG. No.:	VOI 02056-00
REV.:	B	SHEET:	1 of 1